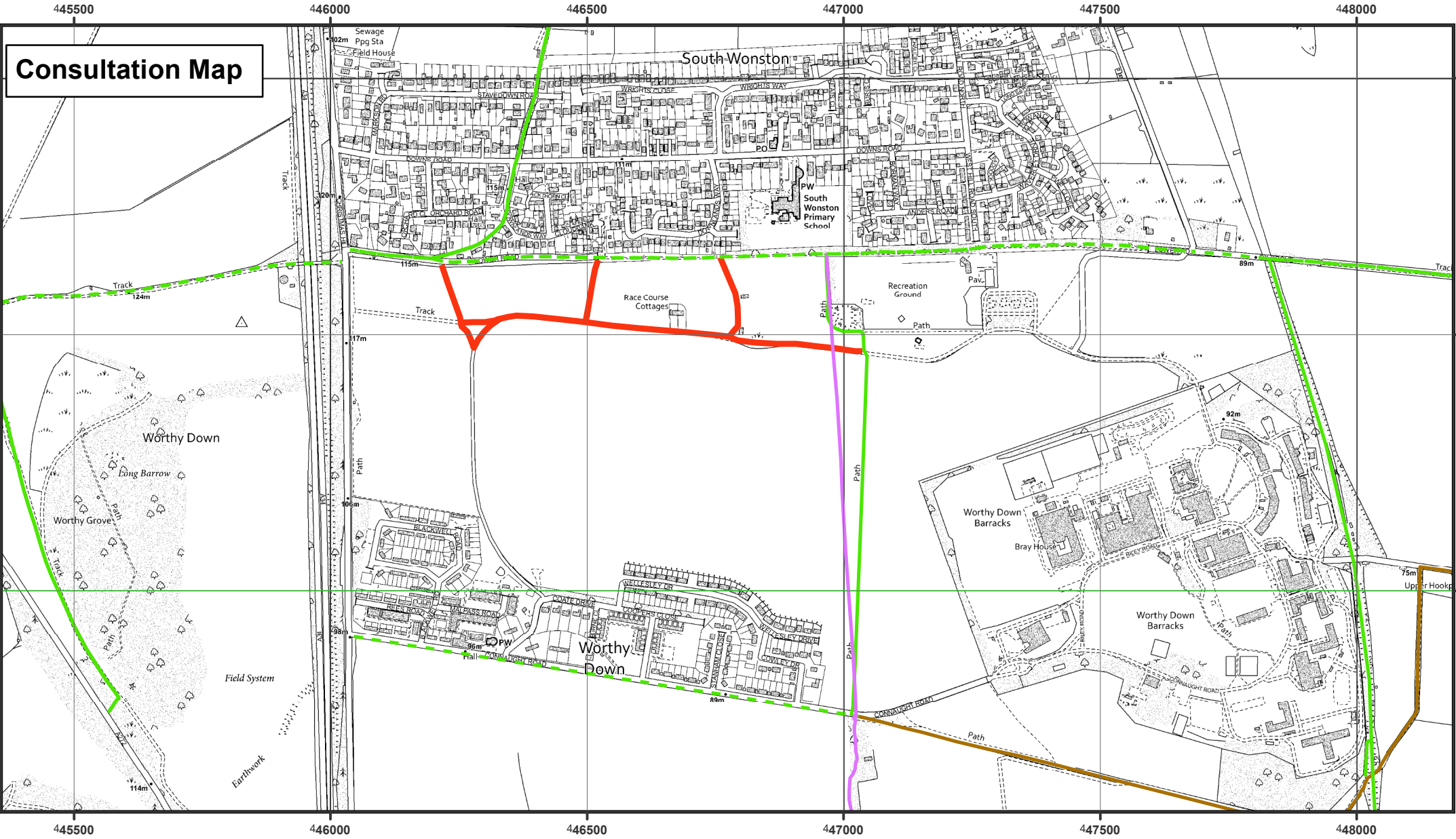


Consultation Map



Application for a Definitive Map Modification Order to record footpaths from Restricted Byway 703 to Recreation Ground.

**South Wonston
DMMO 245**



LEGEND

- Claimed routes
- Public Footpath
- Public Bridleway
- - - Public Restricted Byway
- Byway Open to All Traffic

1:10,000

Countryside Access Team, Universal Services,
Hampshire County Council, The Castle, Winchester, SO23 8UL

© Crown copyright and database rights 2023 Ordnance Survey [100019180].
Use of this data is subject to terms and conditions. You are granted a non-exclusive, royalty free, revocable licence solely to view the Licensed Data for non-commercial purposes for the period during which HCC makes it available. You are not permitted to copy, sub-license, distribute, sell or otherwise make available the Licensed Data to third parties in any form. Third party rights to enforce the terms of this licence shall be reserved to Ordnance Survey